

MEMBERSHIP REPORT 2009-2010

FEBRUARY 17, 2010

FOURTH DISTRICT	UNIT	GOAL	TOTAL	%										
ABILENE	# 39	42	30	71.4%										
ALLEN	# 389	41	36	87.8%										
ALMA	# 32	59	56	94.9%										
BURDICK	# 147	20	18	90.0%										
BURLINGTON	# 38	53	36	67.9%										
CHAPMAN	# 240	103	78	75.7%										
CLAY CENTER	# 101	145	109	75.2%										
COUNCIL GROVE	# 121	55	23	41.8%										
DWIGHT	# 289	66	59	89.4%										
EMPORIA	# 5	375	247	65.9%										
ESKRIDGE	# 28	48	39	81.3%										
EUREKA	# 50	32	28	87.5%										
GRIDLEY	# 296	65	68	104.6%										
HERINGTON	# 12	25	17	68.0%										
HILLSBORO	# 366	153	102	66.7%										
HOPE	# 365	34	27	79.4%										
JUNCTION CITY	# 45	155	114	73.5%										
LEBO	# 323	50	44	88.0%										
LEONARDVILLE	# 40	42	36	85.7%										
LEROY	# 313	21		0.0%										
LINCOLNVILLE	# 347	17	14	82.4%										
LONGFORD	# 88	17	10	58.8%										
LOST SPRINGS	# 355	10	8	80.0%										
LYNDON	# 125	20	14	70.0%										
MANHATTAN	# 17	385	256	66.5%										
MAPLE HILL	# 130	35	25	71.4%										
MARION	# 22	20	26	130.0%										
MELVERN	# 317	31	25	80.6%										
OGDEN	# 207	81	65	80.2%										
ONAGA	# 85	10	5	50.0%										
OSAGE CITY	# 198	95	82	86.3%										
OVERBROOK	# 239	38	25	65.8%										
PEABODY	# 95	51	35	68.6%										
ST. GEORGE	# 260	75	64	85.3%										
ST. MARYS	# 178	39	21	53.8%										
TORONTO	# 325	80	65	81.3%										
WAMEGO	# 172	72	45	62.5%										
WAVERLY	# 119	50	47	94.0%										
WESTMORELAND	# 186	43	37	86.0%										
WHITE CITY	# 299	24	12	50.0%										
YATES CENTER	# 13	57	50	87.7%										
41 TOTAL UNITS														
TOTAL GOAL FOR FOURTH DISTRICT		2834	2098	74.0%										

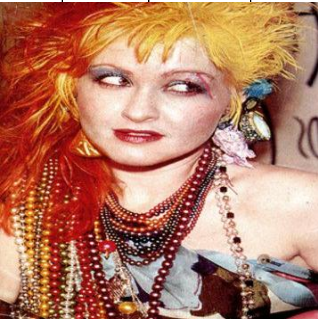


MASCOT : ROSIE THE RIVITEER OR A "WAC"

MEMBERSHIP REPORT 2009-2010

FEBRUARY 17, 2010

EIGHT DISTRICT	UNIT	GOAL	TOTAL	%													
BUCKLIN	# 269	28	28	100.0%													
COPELAND	# 369	21	19	90.5%													
DIGHTON	# 190	102	87	85.3%													
DODGE CITY	# 47	61	52	85.2%													
FORT DODGE	# 107	15	9	60.0%													
FOWLER	# 215	29	19	65.5%													
GARDEN CITY	# 9	92	46	50.0%													
HUGOTON	# 150	50	45	90.0%													
JETMORE	# 290	27	22	81.5%													
LIBERAL	# 80	75	47	62.7%													
MINNEOLA	# 222	21	13	61.9%													
MONTEZUMA	# 203	26	23	88.5%													
NESS CITY	# 152	182	141	77.5%													
SATANTA	# 276	83	58	69.9%													
SCOTT CITY	# 183	14		0.0%													
SUBLETTE	# 205	70	70	100.0%													
SYRACUSE	# 27	17	18	105.9%													
TRIBUNE	# 311	14		0.0%													
ULYSSES	# 79	73	58	79.5%													
19 TOTAL UNITS																	
TOTAL GOAL FOR EIGHTH DISTRICT		1000	755	75.5%													
DISTRICT STANDINGS 2009-2010																	
					UNIT DISTRICT TOTALS					15734							
					DEPT. UNIT # 58					14							
					GRAND TOTAL					15748							
1ST - 1st DISTRICT	2918	83.70%			TOTAL UNITS					257							
2ND - 6th DISTRICT	2817	82.70%			TOTAL VIMS					681							
3RD - 5th DISTRICT	2042	81.60%			DEPARTMENT GOAL					19,909							
4TH - 7th DISTRICT	1215	77.30%			% TO DEPT. GOAL					79.1%							
5TH - 3rd DISTRICT	1840	76.10%															
6TH - 2nd DISTRICT	2049	76.00%															
7TH - 8th DISTRICT	755	75.50%															
8TH - 4th DISTRICT	2098	74.00%															



MASCOT: CYNDI LAUPER